

BERGEN COUNTY

HI CLASS

L I V I N G

JANUARY-FEBRUARY 2008

\$ 3.95

*Serving Bergen County
for over 23 Years*



Happy New Year

The Whiteface Lodge

Jane and Marius Rubin



During the 19th century, tycoons like Vanderbilt and Rockefeller built vacation hideaways (humbly called “camps”) in the majestic Adirondacks wilderness. Ruggedly constructed from local lumber and stone, these homes offered the utmost in comfort and luxury.

The Whiteface Lodge, a top resort in Lake Placid, NY recreates the atmosphere and tradition of the “Great Camps.” Opened in 2005, this member of prestigious “Leading Hotels of the World,” combines rustic mountain decor with the finest amenities.

The resort’s 86 suites are appointed with rough-hewn wainscoting, hand-forged fixtures, Adirondack furniture, overstuffed beds, and gas fireplaces. Equipped with a full kitchen, private veranda, and amenities such as flat screen TVs and radiant heat flooring, each suite is an all encompassing vacation cocoon.

The Whiteface Lodge is a year round resort, perfectly suited for couples and families.

You can enjoy an entire vacation without leaving the premises.

Treat yourself to a massage at the world-class spa, catch a movie in the 54 seat theater, play a few frames at the bowling alley, or work out in the state-of-the-art gym.

The resort also offers its own year-round ice skating rink, platform tennis, indoor/outdoor swimming pool, fishing pond, hiking trails, snowshoeing and cross country skiing in winter, and nightly bonfires with s’mores. In summer the resort operates a private beach club on Lake Placid where you can enjoy swimming, canoeing, boating and scenic tours on the lake. In addition there are special activities ranging from artists in residence programs, to kids’ camps.

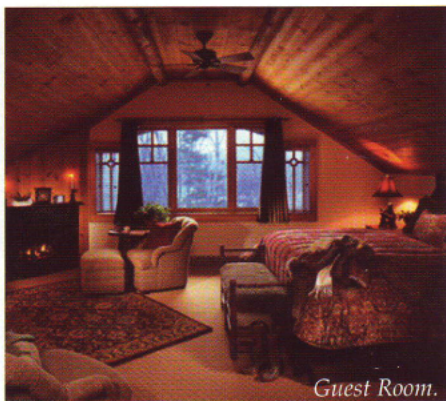
Dining at *The Whiteface Lodge* is an experience not to be missed. The restaurant *Steak & Stinger* is located in a spacious, soaring hall, its ceiling supported by massive logs. The wood paneled walls are appointed with native decorations and

impressive hunting trophies. On the sides, two oversized stone fireplaces cast a warm glow over the airy dining room. The cuisine is modern American, featuring seasonal ingredients, many grown in the area. Try the wood grilled venison with zinfandel jus, caramelized leeks and rosemary polenta, or the pan-seared seabass with a blood orange ginger glaze. The knowledgeable sommelier will help you select the perfect wine to accompany your meal.

The resort offers a complimentary shuttle to Lake Placid's center, a quaint, alpine downtown offering an array of sports-related stores and fashion boutiques.

Hop in your car and visit the sites of the 1980 Winter Olympics; the ski jump, the high speed skating oval and the bobsled tracks.

In winter, head to the Whiteface Mountain ski area, one the highest elevation slopes in the Northeast.



Guest Room.



Outdoor Lounge.



Steak & Stinger Restaurant.

For a change of pace, take a walk around scenic Mirror Lake and stop for a lite bite or a drink at the *Cottage*, a charming waterfront pub overlooking the lake.

Dine at *The View*, an elegant, award-winning restaurant at nearby *Mirror Lake Inn Resort and Spa*. Try the filet mignon Mediterranean, served on red pepper coulis, or the pan seared scallops with a sage and pumpkin risotto.

Back at *The Whiteface Lodge*, enjoy a nightcap in the lively bar or have cognac and cigars in the outdoor lounge.

The Whiteface Lodge is also a AAA Four Diamonds property, and consistently receives top ratings from prestigious travel publications.

So, pack up and head to *The Whiteface Lodge*. The four and a half hour drive is a breeze and well worth it. And if you enjoy your experience, you may purchase one of the resort's suites for full or partial ownership. Call 800-903-4045 or visit www.thewhitefacelodge.com Δ